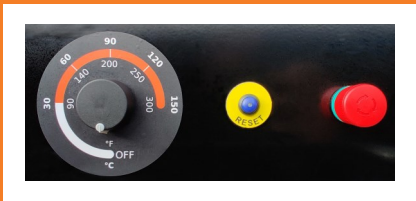




Inlet and Outlet 1/2" BSPP



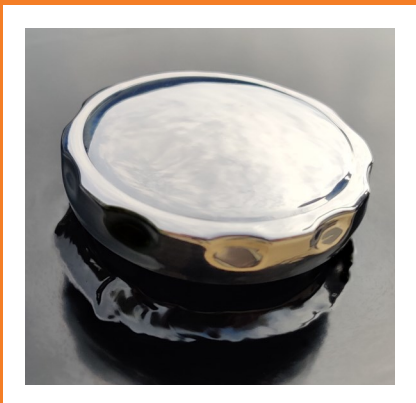
LED display and working hours



Control panel



Magnets for easy side access



Stainless steel fuel cap

Model	HOT BOX 230VAC - 500	HOT BOX 12VDC - 500
Technical Spec.		
W.P. bar/psi	500 / 7250	500 / 7250
Flow: LPM/GPM	45 / 11.9	45 / 11.9
Heat energy: kcal/h / kW	90000 / 105	90000 / 105
Electrical Spec.		
Voltage: V	230 (50Hz)	12
Amperage A	2.36	36
Heat transfer		
Temp. Increase at 10LPM: °C / °F	150 / 302	150 / 302
Temp. Increase at 20LPM: °C / °F	75 / 167	75 / 167
Temp. Increase at 30LPM: °C / °F	50 / 122	50 / 122
Temp. Increase at 40LPM: °C / °F	37 / 98.6	37 / 98.6
Temp. Increase at 45LPM: °C / °F	33 / 91.4	33 / 91.4
Packing dimensions		
L x W x H [mm]	800 x 600 x 1045	800 x 600 x 1045
Total Packing Weight: Kg / lbs	150 / 330	150 / 330

Standard accessories incl. with each machine:

- Display showing working hours.
- LED display to show faults and power state.
- Emergency stop button.
- 1/2" BSPP Inlet and Outlet.
- Magnetically mounted stainless steel side plates, for easy access.
- 4.5 meter cable for power supply.
- 30L robust diesel tank with stainless steel fuel cap.



Lifting hot box



HOT BOX with CE20-500 and dry shut gun 500bar



Rotating nozzle



CE 20 Series



CE 40 Series

Contact:



Safety helmet complete

October 2020

